

Towards Implicit Interaction in Highly Automated Vehicles - A Systematic Literature Review

ANNIKA STAMPF, Institute of Media Informatics, Ulm University, Germany

MARK COLLEY, Institute of Media Informatics, Ulm University, Germany

ENRICO RUKZIO, Institute of Media Informatics, Ulm University, Germany

The inclusion of in-vehicle sensors and increased intention and state recognition capabilities enable implicit in-vehicle interaction. Starting from a systematic literature review (SLR) on implicit in-vehicle interaction, which resulted in 82 publications, we investigated state and intention recognition methods based on (1) their used modalities, (2) their underlying level of automation, and (3) their considered interaction focus. Our SLR revealed a research gap addressing implicit interaction in highly automated vehicles (HAVs). Therefore, we discussed how the requirements for implicit state and intention recognition methods and interaction based on them are changing in HAVs. With this, open questions and opportunities for further research in this area were identified.

CCS Concepts: • **General and reference** → **Surveys and overviews**; • **Human-centered computing** → **HCI theory, concepts and models**.

Additional Key Words and Phrases: implicit interaction, in-vehicle interaction, systematic literature review

ACM Reference Format:

Annika Stampf, Mark Colley, and Enrico Rukzio. 2022. Towards Implicit Interaction in Highly Automated Vehicles - A Systematic Literature Review. *Proc. ACM Hum.-Comput. Interact.* 6, MHCI, Article 191 (September 2022), 21 pages. <https://doi.org/10.1145/3546726>

1 INTRODUCTION

Through the increase of automation, in-vehicle interaction could change fundamentally. A growing number of sensors integrated into the vehicle, major advances in machine learning, and increased processing capabilities allow driver behavior to be captured and interpreted in real-time [73]. This development enables innovative interaction possibilities such as affective in-car voice assistants [15]. This is also reflected through the upcoming trend of research in the fields of Human-Computer Integration [32, 72] or Symbiotic Interaction [59]. However, until now, in-vehicle interaction is mainly based on explicit direct driver inputs such as voice or touch inputs or direct manipulations of knobs or levers [23]. In comparison, human communication is highly based on implicit actions and behaviors, like posture or facial expression. Thus, we are able to make statements about and interact based on another person's states, even if the person does not explicitly communicate these states [91]. Implicit inputs already play a significant role in advanced driver assistance systems (ADASs). Driver drowsiness, stress, fatigue, or distraction can, for instance, be recognized, e.g., through physiological signals [95, 107]. With a higher level of automation, the vehicle takes over the

Authors' addresses: Annika Stampf, annika.stampf@uni-ulm.de, Institute of Media Informatics, Ulm University, Ulm, Germany; Mark Colley, mark.colley@uni-ulm.de, Institute of Media Informatics, Ulm University, Ulm, Germany; Enrico Rukzio, enrico.rukzio@uni-ulm.de, Institute of Media Informatics, Ulm University, Ulm, Germany.

Permission to make digital or hard copies of part or all of this work for personal or classroom use is granted without fee provided that copies are not made or distributed for profit or commercial advantage and that copies bear this notice and the full citation on the first page. Copyrights for third-party components of this work must be honored. For all other uses, contact the owner/author(s).

© 2022 Copyright held by the owner/author(s).

2573-0142/2022/9-ART191

<https://doi.org/10.1145/3546726>

driving task and the accompanying responsibility. Simultaneously the driver becomes a passenger and is no longer restricted to supervising the vehicle and the environment, enabling a focus on non-driving tasks like reading or sleeping. Therefore, acceptance and trust in the vehicle are indispensable [84, 88]. Additionally, a focus shift of in-vehicle interaction towards user experience takes place [23], which in turn creates new fields of application for implicit interaction. Serim and Jacucci [92] recognized difficulties of a precise definition of implicit interaction in human-computer interaction (HCI). They tried to define the term by differentiating between the various used meanings. A few works already outlined implicit in-vehicle interaction [23, 73]. Some other publications provide surveys on context awareness in intelligent vehicles [33, 79]. However, in the context of in-vehicle interaction, Ohn-Bar and Trivedi [79] firmly focused on driver safety monitoring methods for overtaking situations, not taking into account the shifting interaction focus in HAVs. Other existing literature focused on context awareness and sensing from a rather technical point of view, addressing the realization of distributed human-advanced-vehicle systems [33], or giving a technical overview of in-vehicle sensors [34]. According to that, we are not aware of an overview of sensing methods relevant to implicit in-vehicle interaction, considering the underlying automation level and interaction focus.

In this work, we report the results of a literature review for 23 of the major publication venues within HCI (see Table 1) over the last 10 years (2011-2021) for publications addressing implicit state recognition approaches. Two key research questions (RQs) motivated this research:

- RQ1: Which states and intentions can be recognized through implicit input modalities in the current state-of-the-art, and how do the requirements for those machine learning based methods change with increasing vehicle automation?
- RQ2: How does implicit in-vehicle interaction change with increasing vehicle automation?

The main contributions of this work are: (1) Results of a systematic literature analysis on implicit interaction, showing what distinct states of a user can be inferred through implicit inputs in the current state-of-the-art and elaborating on the input modalities used. An additional differentiated examination of the state recognition methods on the basis of the underlying considered automation level and interaction focus revealed a research gap addressing state recognition methods in HAVs. (2) Based on these results, we discussed requirements for the translation of implicit interaction from manual to highly automated driving.

2 BACKGROUND

We started our analysis with a search for existing definitions of implicit interaction.

2.1 Implicit Interaction

In interpersonal conversation, information is communicated via non-verbal cues such as the pitch of the voice, facial expressions, or body language [78]. Those implicit cues improve understanding. In the context of HCI, Schmidt defines implicit interaction as "an action performed by the user that is not primarily aimed to interact with a computerised system but which such a system understands as input" [91, p. 8]. Schmidt further identified the main concepts of implicit interaction as the *perception* and *interpretation* of a user's situational context. Leifer [55] defines implicit interaction as two-dimensional space, which spans over the variables *attentional demand* and *initiative*, showing the diversity of the term's meaning. Also, Serim and Jacucci [92] defined implicit interaction with different meanings. Thus, they have considered the term *implicit* differentiated as *unintentional* (i.e., interaction that is beyond a user's given intents), *attentional background* (i.e., interaction without demanding a user's attention), *unawareness* (i.e., interaction based on behavior or actions a user is not aware of), *unconscious* (i.e., interaction as the execution of tasks, which the user is

not consciously processing), and *implicature* (i.e., an interaction that is based on meanings a user's action implies). They summarized their results in the definition of implicit interaction as "user's attitude towards an input-effect relationship in which the appropriateness of a system response to the user input (i.e., an effect) does not rely on the user having conducted the input to intentionally achieve it" [92, p. 2]. We refer to this definition in the remainder of this paper. Thus, we consider input modalities that are consistent with this definition and are therefore justified by at least one of the differentiated meanings.

2.2 Focus-Shift of In-Vehicle Interaction from Manual to Highly Automated Driving

To reach a shared understanding of the several automation levels, we refer to the common SAE Levels of Driving Automation [96]. By this definition, the automation of vehicles can be divided into five levels, ranging from Level 1, which means no automation, i.e., purely manual driving, to Level 5, which means full automation. With an evolution from current Level 2 to Level 3 vehicles, the system can take over the driving control under limited conditions (e.g., on highways), but the driver is still required to be able to retake control. In Levels 4 and 5, the driver's role changes towards a supervisory role. Thus, the driver becomes a passenger. The system can handle most driving situations in Level 4 and all driving situations in Level 5.

Looking at the lower SAE Levels, in-vehicle interaction aspects mainly refer to ensuring a safe driving condition (e.g., [89, 99, 100, 123]). This involves focusing on enabling a safe driver state in manual driving and a safe shared control state in conditionally automated driving by focusing, for instance, on achieving successful takeover requests and keeping the driver in the loop. An introduction of Level 4 and 5 vehicles, however, leads to a shift of the driving responsibility from the driver to the vehicle. With this transition, establishing and maintaining trust and acceptance towards the vehicle becomes more important in the design of in-vehicle interaction concepts [84]. Furthermore, as the vehicle takes over the driving task, the driver instead becomes a passenger, able to focus on non-driving-related tasks, such as reading, sleeping, or working. Thus, the interior of future vehicles could more closely resemble the pattern of a working space or living room¹. In their work, Stevens et al. [97] also draw the comparison of a possible design pattern with a mobile, tiny house, striving for a multi-functional environment. As "trust and use are often associated with users' experience of the driver-vehicle interfaces and interior design" [35, p. 1], and as the automotive industry realizes it as a unique selling point [23], user experience is another aspect which is gaining high prominence in the design of in-vehicle interaction concepts.

3 SYSTEMATIC LITERATURE REVIEW

To learn about the meaning of implicit input in related work, we conducted a systematic literature survey following the PRISMA Statement methodology [69]. For the search, we selected three digital libraries that include the most relevant conferences and venues on automotive user interfaces (ACM DL, IEEE Xplore and Elsevier Science Direct). We queried the most cited HCI venues [39] plus additional proceedings relevant for automotive research resulting in 23 venues (see Table 1). Our queries each consist of three query parts, which narrow down the results to the thematic focus of the review. (1) The focus is on the automotive domain, which is set by the keywords "vehicle", "car", "driving", or "in-vehicle". (2) The restriction to the context of HCI is constrained by the keywords "input", "interaction", or "interface". (3) The focus on implicit interaction is built out of three sets: The first set is an explicit search for "implicit" interaction. However, most of the literature dealing with implicit input modalities does not directly mention the keyword "implicit". Thus, the second set

¹<https://www.mercedes-benz.com/de/innovation/autonomous/forschungsfahrzeug-f-015-luxury-in-motion/>; Accessed 11-JANUARY-2022

is composed of gathered possible implicit input modalities. Therefore, we used the presented sensor modalities proposed by Sharma and Pavlovic [93]. In addition, we went through all publications of the 12th International ACM Conference on Automotive User Interfaces and Interactive Vehicular Applications (2020) and examined them for modalities that could be used implicitly. The goal of processing implicit input is to identify the state/intention of the driver using pattern recognition and machine learning approaches. The processing of data with the goal of state/intention recognition is usually called "prediction", "recognition", "estimation", or "classification" [81, 85]. Thus, the third set is composed of these keywords. This allowed us to include modalities that could not be covered by the preliminary research due to e.g. different wording or synonyms used. Furthermore, this includes literature that obtained implicit input as an implication of explicit input. An example is the processing of explicit pedal input to implicitly understand a driver's driving style [119]. The resulting queries can be seen in Table 2. In addition, we have narrowed down our search to publications from the last ten years (2011-2021) and only considered titles and abstracts for search. After the removal of duplicates, a total of 1924 publications remained, which we further investigated in an abstract screening.

3.1 Review Process

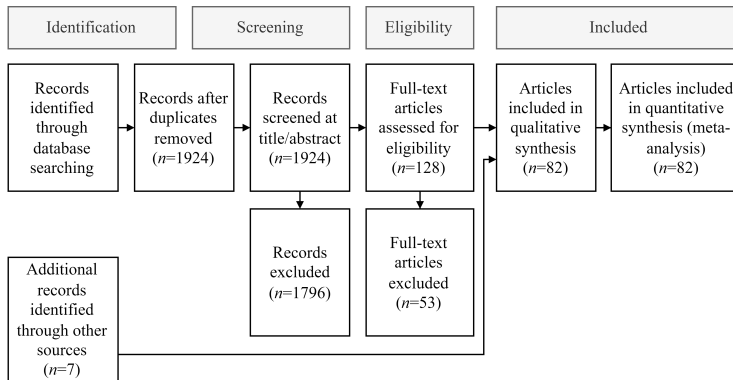


Fig. 1. PRISMA Flow Diagram [69] illustrating our paper selection process.

For an abstract screening, we defined inclusion criteria: (1) The publication focuses on processing implicit human inputs based on our understanding of implicit inputs (see Background) to obtain information about the user's state or intentions. (2) The publication is related to an automotive context. Further, we defined exclusion criteria: The publication's main contribution is a taxonomy, design space, literature review, or workshop.

To analyze the selected articles, we used sysrev.com, which enabled us to screen the publications collaboratively. Two authors were involved in the screening process. The first author reviewed each publication and the second one reviewed 805 publications. A calculation of the Cohens Kappa [67] revealed an inter-rater reliability of $\kappa = 73.8$ ($p = 96.6\%$), indicating a substantial agreement according to Landis and Koch [53]. Afterward, all conflicts were discussed and could be solved. Our Sysrev project is publicly accessible². It includes the 1924 screened publications with abstracts and labels attached by the authors.

The abstract screening resulted in a sample of 128 publications. Those publications were further analyzed by a full-text screening. In this step, we excluded an additional 53 papers for which only

²<https://sysrev.com/u/5332/p/79138>

the full-text analysis revealed that they do not meet previously defined inclusion and exclusion criteria. We additionally discovered seven works by reference crawling the most relevant results. In total 82 publications were included in the quantitative synthesis. Figure 1 shows the complete PRISMA flow diagram, illustrating our paper selection process.

For the quantitative synthesis, we developed a set of labels to summarize the work and to note the most important aspects for our review. Five labels were extracted: (1) implicit input modalities (string label), (2) vehicle automation (categorical label), (3) contribution (string label), (4) implicit interaction (string label), and (5) notes (string label).

Conference / Venue	Number of publications
ACM Conference on Human Factors in Computing Systems (<i>CHI</i>)	119
ACM Conference on Computer-Supported Cooperative Work & Social Computing (<i>CSCW</i>)	11
ACM Conference on Pervasive and Ubiquitous Computing (<i>UbiComp</i>)	27
ACM/IEEE International Conference on Human Robot Interaction (<i>HRI</i>)	52
ACM Symposium on User Interface Software and Technology (<i>UIST</i>)	9
ACM Transactions on Computer-Human Interaction (<i>TOCHI</i>)	0
ACM Multimodal Interfaces and Machine Learning for Multimodal Interaction (<i>ICMI-MLMI</i>)	45
ACM Designing Interactive Systems (<i>DIS</i>)	14
ACM Intelligent User Interfaces (<i>IUI</i>)	28
ACM International Conference on Human-Computer Interaction with Mobile Devices and Services (<i>MobileHCI</i>)	18
ACM Conference on Automotive User Interfaces and Interactive Vehicular Applications (<i>AutoUI</i>)	192
IEEE Transactions on Affective Computing	30
IEEE Transactions on Human-Machine Systems	50
IEEE Transactions on Haptics	16
IEEE Transactions on Intelligent Transportation Systems (<i>ITS</i>)	254
IEEE Transactions on Vehicular Technology	188
IEEE Transactions on Intelligent Vehicles	49
IEEE Intelligent Vehicles Symposium (<i>IV</i>)	115
IEEE International Conference on Intelligent Transportation Systems (<i>ITSC</i>)	114
IEEE Access	764
Elsevier International Journal of Human-Computer Studies	13
Transportation Research Part F: Traffic Psychology and behavior	217
Elsevier Robotics and Autonomous Systems	54
Combined	1924 (without duplicates)

Table 1. Number of publications for the retrieved conferences and venues.

4 RESULTS

In this section, we present the results of the literature review. It includes 75 publications from the previous screening and seven additional works [26, 49, 50, 64, 81, 104, 112] by forward and backward reference searching of relevant results.

4.1 Modalities

The following provides an overview of the modalities and their usage to access a user's states, also presented in Table 3.

4.1.1 Physiological Signals. Common measured and processed physiological signals are (1) electrical heart activities, like heart rate, heart rate variability (HRV), or other features and cues of

Level	ACM Query
Direct	(vehicle? OR car? OR driver? OR "in-vehicle" OR "driving") AND "implicit" AND (interaction? OR input? OR sensing OR interface?)
Modalities	(vehicle? OR car? OR driver? OR "in-vehicle" OR "driving") AND (interaction? OR input? OR interface?) AND (eye? OR gaze OR blink* OR pupil* OR "facial expression" OR "facial behavior" OR mimic OR "visual behavior" OR gesture OR motion OR movement OR posture OR "head pos*" OR "body pos*" OR voice OR speech OR speak* OR verbal OR "physiological signal?" OR "brain activit*" OR "brain-computer" OR biometrics OR emotion OR emotional)
State	(vehicle? OR car? OR driver? OR "in-vehicle" OR "driving") AND (interaction? OR input? OR interface?) AND (predict* OR estimat* OR classif* OR recogni*)

Table 2. ACM queries.

an electrocardiogram (ECG), and (2) electrodermal activity (EDA), which is responsible for the electrical characteristics of the skin [52].

Electrical Heart Activities. The activity of the Autonomic Nervous System (ANS) changes with the level of stress, fatigue, or drowsiness [5, 7]. This activity can be sympathetic or parasympathetic. Increased sympathetic activity and decreased parasympathetic activity imply wakefulness states, while inverse activities are characteristic of relaxation states [104]. HRV can be measured to estimate a user's fatigue level [103]. Balasubramanian and Bhardwaj [7] used a cECG to measure HRV components in an unobtrusive manner through electrodes on the back of the driver's seat. Du et al. [27] estimated the level of driver fatigue through a measurement of the heart rate and an additional capture of eye and mouth openness level to stabilize possible noisy results of the heart rate measurement.

Electrodermal Activities. As the sympathetic nervous system controls sweating by innervating the sweat glands, changes in skin conductivity provide information about the sympathetic arousal of a user [109]. Wickramasuriya and Faghieh [109] measured the palm EDA to estimate a user's state of arousal.

Thermal Signals. Our SLR revealed that in multiple publications, the perinasal perspiration is also measured as an unobtrusive alternative to palmar EDA [13, 36, 82] to estimate a user's state of arousal.

Respiration. Grassmann et al. [40] showed that respiratory changes in response to cognitive load. However, we only found publications using those respiratory cues (mainly breathing rate [15, 42]) as part of multimodal input for cognitive load estimation.

Brain-Activity. We found six papers that used electroencephalography (EEG; a method of measuring electrical activity on the scalp) to determine a user's intention with respect to driving decisions, such as the intention to turn right/left or to change speed [6, 11, 12, 31, 45, 58, 61]. The authors focused on paralyzed users or users with movement disorders to enable them to make independent driving decisions, which are then executed by automated maneuvering. As these driving decisions currently require users to focus on external stimuli, this type of interaction is not implicit. Nevertheless, it has been included in the SLR because this input type is a non-negligible opportunity for implicit interaction. The work of Guo et al. [41] even shows in this context that with EEG (without stimuli), it is already possible to detect whether the driver has focused on certain hazards or not. Further, Yu et al. [118] described an approach to detect vigilance.

4.1.2 Auditory. In contrast to explicit speech inputs, implicit speech inputs are characterized by verbal utterances that are not directly addressed to the vehicle or paralinguistic cues. Thus, implicit speech inputs are signals of linguistic messages that do not contain direct information. Examples

EMG	Modalities																	Recognition	
	Physiological		Auditory		Visual			Kinesthetic				Profile							
	Heart Activity	EDA	Thermal Activity	Respiration	Brain-Activity	Linguistic	Paralinguistic	Gaze	Blink	Features	Pupil	Body Pose	Head Pose	Facial Landmarks	Facial Features	Driving Activity	State		Trait
[95] [15] [42]	[95] [15] [42]	[15] [5]	[15] [42]				[14] [74] [4] [112]	[74]		[43] [15] [74]					[15] [99] [95] [15]				<i>Physiological States</i> Cognitive Load
[7] [27] [63]	[63]										[63]				[51] [27] [89]				Fatigue Stress
					[41]		[105] [70]					[70]			[70]				Attention
[36] [82]	[36] [82]	[36] [82]	[36] [82]				[36]	[10]	[107]	[36]		[107]			[36]	[107] [36] [98] [82]			Distraction
[124] [83] [104]					[100] [56]				[112]	[117]		[56]			[102]				Drowsiness
															[46]				Physiological Parameters
[26]	[26]						[26]												<i>Emotional States</i> Anxiety
			[24]		[50] [49]	[50] [49]													Valence Arousal State
	[109]																		Sympathetic Arousal
[106] [106]	[106]		[106]		[118] [50] [49]	[50] [49]													Vigilance Frustration
							[4]												Trust
												[48] [9] [115] [65] [121] [8] [24] [64]	[66] [24]		[65] [66] [121]				<i>Kinesthetic States</i> Activity Recognition
[108] [81]	[108] [81]	[108]					[22] [3] [111] [81]	[22]				[101] [37]	[71] [22] [122]			[114] [71] [22] [108] [68] [3] [122] [111] [38] [60] [101] [119] [37] [81] [38]		[37]	<i>Driving-Related States</i> Driving Behavior
																			Vehicle Control
					[11] [45] [61] [6] [12] [58] [31]														Destination Intention
													[94]		[47] [54] [18] [20]		[47] [54] [18] [20]		Driving Performance
							[80] [19] [113]					[80]						[21]	Crash Risk
																[116]			Reaction Time Driving Uncertainty
[13] [13] [90]	[13] [13] [13]	[13] [13] [13]													[89]				<i>Other</i> User Identification

Table 3. Overview of assessed modalities with reference to recognized user states and intentions.

are pauses in speech, speech rhythm, volume, intonation and pitch [50]. Paralinguistic inputs can provide information about the current emotional state of a user. Work by Jones and Jonsson [50] explored the recognition of the emotional state through paralinguistic inputs as dimensions of valence and arousal. A later publication of Jones and Jonsson [49] obtained paralinguistic cues in speech to recognize emotions in older car drivers. For a deeper understanding, Zepf et al. [120] provided a further overview of studies on the recognition of emotions in the automotive context, including emotion recognition through speech.

4.1.3 Visual. Our SLR revealed that visual signals were mainly used as gaze-based implicit inputs. However, also blink frequency and pupil dilation was considered.

Gaze. Akash et al. [4] used eye gaze to estimate a user's trust in the automated vehicle and surveillance of the scene. We found multiple publications that showed that gaze direction can be a good indicator of where attention is directed [70], if a driver is distracted [36], or to measure a driver's cognitive load state [4, 74]. Biswas and Prabhakar [14] estimated workload by exploring saccades, which are fast, erratic movements of the eyes. Wu et al. [113] used saccades to predict a driver's reaction time.

Blink. Drowsiness can be estimated through the blink frequency [112]. Further, Benedetto et al. [10] considered blink frequency as a way of estimating visual workload and showed that it can serve as an indicator of distraction.

Pupil Dilation. We found several publications which accessed the pupil diameter to estimate a driver's cognitive load [15, 43, 44]. Niezgodna et al. [74] further accessed the pupil diameter to determine a driver's distraction.

4.1.4 Kinesthetic. Kinesthetic implicit input includes muscle activities, position and movements of the body, and individual body parts, for example, head, arms, and legs. In addition, we considered facial features.

Body Pose. Our SLR revealed several approaches to recognize user activities by obtaining the body pose or body movements [8, 48, 65, 66, 115, 121]. Activities that can be recognized by their approaches are, for example, *driving normally*, *reaching for center compartment*, *adjusting the radio*, *drinking*, *preparing*, *talking to a passenger*, or *talking on a phone*. Tran et al. [101] observed the foot position to predict a driver's foot movement and, thus, could recognize the braking aspect of the driving behavior. Based on posture and sitting position, the tension and, thus, the stress level can be detected [63].

Head Pose. We found work that used a driver's head pose with head pitch and yaw position to estimate a driver's focus of attention to predict the lane change intention [22, 71] with additional driving and environmental information. Wang et al. [107] further used the head pose to estimate the driving load and driving capability of a driver.

Facial Features. With the recognition of facial features and understanding of facial expressions, multiple statements can be inferred about a user's state. Examples are the emotional state [120] or the driving capability through driver fatigue detection [27, 102]. Recognition of facial expressions was additionally used (besides the body and head pose) by Martin et al. [65] and Zhang et al. [121] for the identification of a user's activity. We further found that Huang et al. [46] used facial features to estimate heart rate (58.60% accuracy), skin conductance (83.78% accuracy), and vehicle speed (59.89% accuracy) as a contactless alternative to multiple bio-sensors in the vehicle.

Driving Activity. Driving is an explicit activity. Direct interactions such as actively moving the steering wheel to determine the vehicle's direction or using the pedals to consciously control the speed are necessary. However, according to the definition of Serim and Jacucci [92], if the interaction relies on meanings a user's action implies, such as the driving style, it can be described as implicit.

Therefore, we consider these implications obtained by driving activities to be implicit input. For example, our SLR revealed multiple publications accessing vehicle data to obtain information about a driver's driving style [29, 82, 119], such as aggressive or normal driving, or a driver's driving skill level [18]. Gonzales et al. [37] further estimated a driver's risk-aversion by combining and processing driving activity and body pose. The driving activity can also be used to make statements about the driver's intention regarding a lane change [22, 38, 71, 108, 114] or driving behavior in general [3, 111, 122].

4.1.5 Profile. In addition to the above-mentioned indirect implicit information about the user's state, such as driving style, there is also the possibility of implicitly obtaining information about user traits and preferences. The difference is that user traits are stable compared to user states, which are fluctuating [15].

User Traits. A large number of algorithms identifying user traits have been developed in recent years. Ranjan et al. [86], and Aji et al. [2], for example, estimated a person's gender by fusing facial features. Also, methods for age recognition do exist [87]. However, our SLR did not reveal any publications that make use of implicit gained traits as input for in-vehicle interaction.

Preference. We found a publication that used explicit vehicle data to obtain implicit information about a driver's action preference to predict driving behavior [37]. Imai et al. [47], and Lassoued et al. [54] recorded route trajectories to gain knowledge about destination and route preferences implicitly and thus predict future destinations and routes.

4.2 Level of Automation and State Transition

State	Manual Driving	Shared Control	Autonomous Driving	Independent of Automation Level
Kinesthetic State	8: [8, 9, 24, 48, 65, 66, 115, 121]		1: [64]	
Physiological State	27: [5, 7, 10, 14, 15, 27, 36, 41–43, 51, 56, 63, 70, 74, 82, 83, 89, 95, 98–100, 102, 106, 107, 117, 124]	2: [105, 112]	1: [4]	2: [46, 118]
Emotional State	4: [15, 49, 50, 109]		1: [26]	
Driving-Related	25: [3, 11, 18–22, 25, 37, 38, 45, 47, 54, 61, 68, 71, 80, 82, 101, 108, 111, 114, 119, 122, 123]	6: [6, 29, 81, 94, 113, 116]	2: [12, 31]	1: [58]
Other				2: [13, 90]

Table 4. Allocation of the surveyed articles to the considered level of automation.

An essential step toward recognizing user states through implicit input modalities is to look at the above-used methods from the perspective of the underlying level of automation, as the recognition methods and goals may depend on the context in the vehicle, which is changing with SAE Level. While in manual driving the focus is on the primary driving task, at higher levels of automation, the user's focus shifts to secondary and tertiary tasks due to the elimination of the primary driving task. This transformation also influences possible states of the user concerning the characteristics, i.e., how these states appear or what causes them. Table 4 shows that the majority of the surveyed publications examined are mainly concerned with manual driving (78%). 10% focused on recognizing

states in the condition of shared control, and only 6% put a fully automated vehicle state at the center of their considerations. For the kinesthetic states, the detection of driver activities can be listed as an example of a recognition method that can not be adopted for all SAE Levels without modifications. Deep learning based models for activity recognition usually require data-intensive training. Therefore, most models are limited to the recognition of a small number of pre-classified actions and are directly related to the driving task, such as *normal driving*, *hands on/away from the wheel*, or *talking on the phone* [8, 48, 121] and use manual driving datasets [1, 28]. However, with the transition to automated driving, the condition changes, as both possible activities and the vehicle interior change, e.g., through swiveling chairs that change a user's observation angle or activities that were not possible while driving. Therefore, to transfer activity recognition models to the automated context, the models need to be re-trained with respect to those evolving conditions. Thus, Martin et al. [64] proposed a new dataset Drive&Act for driver behavior recognition in automated vehicles. Nevertheless, the number of possible activities in automated vehicles is greatly expanding, which is why more datasets are needed to cover those. Our SLR also shows that a lot of work deals with state and intention recognition methods that are in close contact with the manual driving task, such as the recognition of driving behavior, driving performance, crash risk, reaction time, driving uncertainty, and driving style. These will vanish nearly entirely in the automated context. Thus, the shift of tasks towards secondary and tertiary tasks also eliminates driving activity as a contactless input modality, which some methods use to measure distraction [36, 82, 98, 107] or cognitive load [95, 99], for example. This reinforces the need for other (contactless) methods for detecting physiological conditions, such as Huang et al.'s approach [46] of estimating physiological parameters from facial image data. Overall, it is also noticeable that many publications only consider manual driving and refer exclusively to use cases in this context. Still, the methods themselves could be applied regardless of the automation level. For example, detecting physiological and emotional states is mainly considered in the manual driving context and with the ulterior motive of recognizing critical driver states. Although, it could also be useful in an automated condition to detect drowsiness, boredom, frustration, anxiety, or other states, for instance, to enhance the user experience by adapting the driving style, infotainment functions, proactive feedback, etc. Our analysis shows that only a few papers consider state recognition in a highly automated context. Future research should focus on how to detect user states independently of driving behavior and in an unobtrusive manner (contactless, at best) so that the methods apply to drivers as well as passengers, including users of HAVs. Furthermore, researchers should keep the fully automated context in mind when developing state recognition approaches and also consider appropriate use cases in this context and evaluate their methods on these.

4.3 Shift of Interaction Focus

In a further step of our analysis, we extracted the publications that additionally investigated implicit interaction on the basis of implicit input modalities and the physiological, kinesthetic, emotional, and driving-related states and intentions recognized through them. As the interaction focus changes with increasing automation level, we re-analyzed these extracted publications from this point of view. In the previous section, we found that most of the papers examined deal with state recognition in manual driving, which is reflected in the interaction concepts considered (see Table 5): Almost exclusively, concepts with the focus on achieving a safe driving state were implemented. Therefore, implicit inputs are mainly used to recognize the states and intentions of the driver, evaluate them based on driver safety, and intervene if necessary. Taniguchi et al. [99], for instance, used the detected cognitive load to determine the appropriate time for non-driving-related in-vehicle interaction dialogues. An approach to alert the driver if dangerous driving behavior was recognized was presented by Panagopoulos and Pavlidis [82]. Further, Tanveer et al. [100] proposed

	Safe Driving Condition	Acceptance and Trust	User Experience and Comfort
Cognitive Load	[15, 99]		
Driving Behavior	[25, 82, 123]		
Drowsiness	[100]		
Action Recognition	[48, 57]		
Distraction	[94]		
Driving Uncertainty	[116]		
Stress	[63]		
Driving Style	[29, 82]		
Cognitive Load and Driving Capability	[107]		
Cognitive Load and Trust	[4]	[4]	
Action Recognition and User Identification	[89]		[89]

Table 5. Focus of implicit interaction based on recognized states.

a drowsiness warning system. Among all the works, we could identify only two that, starting from implicit inputs, presented an interaction design concept to increase user experience and comfort or acceptance and trust towards the vehicle. The first work is by Akash et al. [4]. They proposed an adaptive augmented reality interface, showing automation transparency by highlighting objects detected in road traffic, which depend on the recognized trust and workload to calibrate the driver's trust. The second approach was shown by Rivera et al. [89]. They proposed a prototyping framework for adaptive user interfaces and considered the exemplary use case *user aware hand-over request*, where driver activities are tracked and displayed on a control panel to perform a safe hand-over. Here, the focus is again on maintaining a safe driving condition. In a second use case, they focused on user experience. Thus, a user recognition with automatic adaptation of the infotainment system to the user profile was implemented. However, they did not evaluate the proposed system.

5 DISCUSSION

5.1 Which States and Intentions Can be Recognized Through Implicit Input Modalities in the Current State-Of-the-Art and How Do the Requirements for those Machine Learning Based Methods Change with Increasing Vehicle Automation?

Our SLR shows an overview of current state-of-the-art in-vehicle state recognition methods and goes into more detail about the input modalities used. We found that most methods are implemented with a manual driving condition in mind. For this reason, many methods cannot be used at all for higher levels of automation or only with reconsideration and adaptation.

5.1.1 Translation of Kinesthetic State Recognition Methods. Methods that recognize kinesthetic states are usually based on manual driving data sets. It is, therefore, necessary to re-examine which tasks and associated activities HAVs are likely, such as Wilson et al. [110] did, and generate new data sets based on these tasks, such as the Drive&Act dataset [64]. We suggest that camera-based activity recognition in HAVs should be of further interest. In particular, attention could be paid to recognizing subconscious behavior patterns since they might provide more information about a user's emotional state enabling an extension of other contactless state recognition methods. As an example, bouncing legs could indicate that a user is nervous.

5.1.2 Translation of Emotional State Recognition Methods. Most emotion recognition methods from the automotive context can be transferred to higher levels of automation, as they are estimated either

by image data and facial expressions or by physiological parameters, which are independent of the factors changing with increasing SAE Levels. Here we see the potential in in-vehicle interaction concepts with the aim of meeting the requirements of the new interaction focus through new use cases and thus having a positive influence on acceptance, trust, user experience, and comfort. Dillen et al. [26], for example, have done just this with the development of a fear and comfort detection approach to individually assess differentiated driving styles. In general the topic of affective interaction is widely discussed for lower SAE Level [15–17, 30, 62]. And even in the context of HAVs, a few works already deal with the design of use cases [76, 77]. Nevertheless, many open questions still need to be explored in future research. Especially for the goal of emotion regulation, some things need to be investigated, such as the recognition of the emotional source (i.e., how to find out if the user is anxious about the driving style or an upcoming appointment) and individual preferences (i.e., how to find out whether the user prefers to listen to music or watch a movie when bored).

5.1.3 Translation of Physiological State Recognition Methods. Considering physiological states, our SLR revealed that most state recognition methods were implemented primarily with the intention of ensuring a safe driving state in manual driving. The best possible target is the contactless recognition of states, which multiple methods already do consider [10, 46, 74]. Nevertheless, our SLR also showed that numerous methods monitored and processed driving-related input modalities to meet this challenge. Future work, therefore, needs to consider which physiological states might be of interest for designing interaction concepts in HAVs and how these states can be detected in a contactless manner and independent of a user's current activity. Further, as with the emotional state, methods should be found to recognize the source of a state to respond appropriately (e.g., how to find out whether a user is stressed due to high traffic volume or a current phone call).

5.2 How Does Implicit In-Vehicle Interaction Change with Increasing Vehicle Automation?

The dissimilarity between the desired state in manual and autonomous driving results in a new pipeline for implicit input-based interaction. Thus, Figure 2 shows our understanding of the targeting pipeline in implicit interaction in HAVs. First, implicit inputs are processed to recognize a user's state. For this purpose, identified physiological, emotional, and kinesthetic states are fused. Unlike manual driving, where the driver's desired state is predefined as the state in which the vehicle can be safely controlled, the desired state is determined by the interpretation of the recognized state with regard to obtained profile information, such as a user's mood, traits, or preferences and environmental and personal context. Finally, the desired state is translated into action.

5.2.1 Indistinct Desired States Lead to Growing Uncertainties. As we have already seen in our SLR, through this process and the characteristics of current state recognition and intention prediction systems having uncertainties, there is always a residual probability of wrong assumptions leading to inappropriate actions. As a result, it might cause problems at lower levels of automation (e.g., ADAS functions might be triggered erroneously), as well as in high levels of automation, where it might lead, for instance, to inappropriate recommendations or driving adaptations. In the case of HAVs, however, there is the additional factor that the detected condition can also be misinterpreted, resulting in a false desired state being inferred. As an additional explanation: The desired state in manual driving is always the state in which the driver can safely operate the vehicle, meaning, for instance, an attentive, focused, alert, undistracted state. In the context of automated driving, inferring the desired user state from the recognized state is more complex. Thus, for instance, the desired state of a drowsy driver could be *awake*. However, it could just as well be *asleep*. This increases the probability of false assumptions. Thus, when designing interaction concepts based on

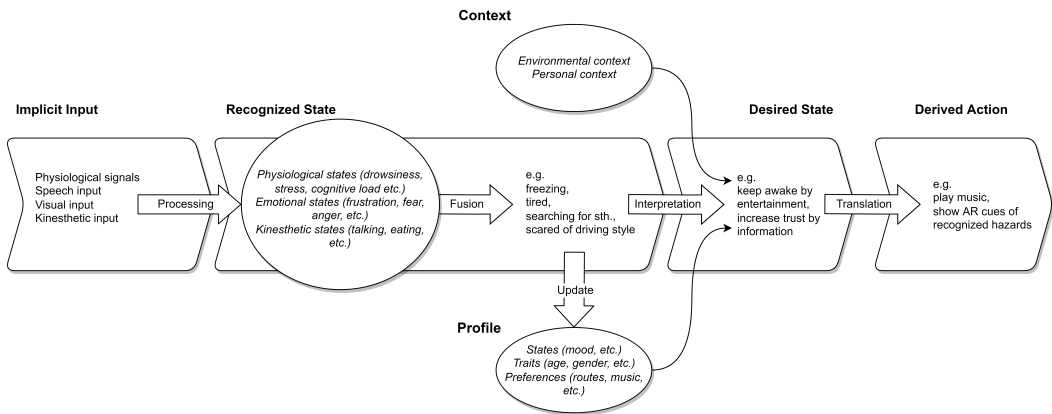


Fig. 2. Pipeline for implicit interaction.

such machine learning methods, it is, especially for HAVs, essential to consider what impacts the user will experience if an action is taken in response to a wrongly recognized and interpreted state. Also, concerning the central importance of acceptance and user experience in HAVs, considering incorrect assumptions should take place, as interactions based on them might influence these aspects negatively. Those negative effects could be described as the cost of failure, which needs to be offset against the expected benefits an action based on correct assumptions would have, both weighted by the accuracy of the machine learning model. Justified by the Halo effect [75], the way a vehicle agent interacts with its users also influences their expectations of the vehicle's capabilities [35]. For this reason, in the context of implicit in-vehicle interaction, it needs to be explored whether the complexity of user states the vehicle can recognize and react to also influences the perceived driving capabilities. If so, this needs to be taken into account in the design of new interaction concepts as the perceived safety might be positively influenced, which in turn has a direct effect on trust. However, this also means that proactive actions based on misrecognized or misinterpreted implicit inputs could negatively affect perceived safety and trust in the automation. Thus, overall, we consider it necessary to identify influencing factors that quantify the benefits of an implicit input based action and the costs that can arise when this action is caused by incorrect assumptions. This should lead to the ability to perform a cost-benefit analysis based on the accuracy of the machine learning model to create a quality assessment framework for implicit in-vehicle interaction.

6 LIMITATIONS AND FUTURE WORK

Our SLR has mainly shown research gaps in the area of implicit input-based interaction. We see the goal of further work to close the gaps by (1) extending existing use cases and associated implicit input-based interaction concepts, (2) evaluating, adapting, and extending current state recognition methods for a highly automated context to implement designed interaction concepts, and (3) evaluating these concepts in further studies (with consideration of possible false assumptions) based on the identified new requirements. The latter also involves investigating how passengers ultimately interact with such a system. As Serim and Jacucci [92] stated, users might intentionally trigger a system action when they "comprehend the causal relationship between their inputs and the system effects" [92, p. 7]. Thus, in particular, it needs to be investigated if and how the users' behavior adapts.

7 CONCLUSION

This work's goals were to examine which states and intentions can be recognized through implicit input modalities in the current state-of-the-art and how the requirements for those methods and for implicit interaction change with increasing SAE Level. Therefore, we conducted a literature review regarding implicit interaction in the in-vehicle context, including 82 publications, which revealed a research gap addressing implicit interaction in HAVs. Findings led to a discussion of requirements for the adoption of implicit interaction to HAVs which opened questions and opportunities for further research in this area.

ACKNOWLEDGMENTS

This work was conducted within the project 'Self-Supporting Multimodal Interaction' (Semulin) funded by the Federal Ministry for Economic Affairs and Climate Action (BMWK).

REFERENCES

- [1] Yehya Abouelnaga, Hesham M. Eraqi, and Mohamed N. Moustafa. 2017. Real-time Distracted Driver Posture Classification. *CoRR abs/1706.09498* (2017), 6 pages. arXiv:1706.09498 <http://arxiv.org/abs/1706.09498>
- [2] S Aji, T Jayanthi, and M.R. Kaimal. 2009. Gender identification in face images using KPCA. , 1414-1418 pages. <https://doi.org/10.1109/NABIC.2009.5393713>
- [3] Naoki Akai, Takatsugu Hirayama, Luis Yoichi Morales, Yasuhiro Akagi, Hailong Liu, and Hiroshi Murase. 2019. Driving Behavior Modeling Based on Hidden Markov Models with Driver's Eye-Gaze Measurement and Ego-Vehicle Localization. In *2019 IEEE Intelligent Vehicles Symposium (IV)*. IEEE, New York, NY, USA, 949–956. <https://doi.org/10.1109/IVS.2019.8814287> ISSN: 2642-7214.
- [4] Kumar Akash, Neera Jain, and Teruhisa Misu. 2020. Toward Adaptive Trust Calibration for Level 2 Driving Automation. In *Proceedings of the 2020 International Conference on Multimodal Interaction (ICMI '20)*. Association for Computing Machinery, New York, NY, USA, 538–547. <https://doi.org/10.1145/3382507.3418885> event-place: Virtual Event, Netherlands.
- [5] Bernhard Anzengruber and Andreas Riener. 2012. "FaceLight": Potentials and Drawbacks of Thermal Imaging to Infer Driver Stress. In *Proceedings of the 4th International Conference on Automotive User Interfaces and Interactive Vehicular Applications (AutomotiveUI '12)*. Association for Computing Machinery, New York, NY, USA, 209–216. <https://doi.org/10.1145/2390256.2390292> event-place: Portsmouth, New Hampshire.
- [6] Armando Astudillo, Francisco Miguel Moreno, Ahmed Hussein, and Fernando Garcia. 2017. Cost-efficient brain-wave controller for automated vehicles route decisions. In *2017 IEEE 20th International Conference on Intelligent Transportation Systems (ITSC)*. IEEE, New York, NY, USA, 51–56. <https://doi.org/10.1109/ITSC.2017.8317949> ISSN: 2153-0017.
- [7] Venkatesh Balasubramanian and Rahul Bhardwaj. 2018. Can cECG be an unobtrusive surrogate to determine cognitive state of driver? *Transportation Research Part F: Traffic Psychology and Behaviour* 58 (2018), 797–806. <https://doi.org/10.1016/j.trf.2018.07.011>
- [8] Ardhendu Behera, Zachary Wharton, Alexander Keidel, and Bappaditya Debnath. 2020. Deep CNN, Body Pose and Body-Object Interaction Features for Drivers' Activity Monitoring. *IEEE Transactions on Intelligent Transportation Systems* 23, 3 (2020), 1–8. <https://doi.org/10.1109/TITS.2020.3027240>
- [9] Ardhendu Behera, Zachary Wharton, Yonghuai Liu, Morteza Ghahremani, Swagat Kumar, and Nik Bessis. 2020. Regional Attention Network (RAN) for Head Pose and Fine-grained Gesture Recognition. *IEEE Transactions on Affective Computing* (2020), 1–1. <https://doi.org/10.1109/TAFFC.2020.3031841>
- [10] Simone Benedetto, Marco Pedrotti, Luca Minin, Thierry Baccino, Alessandra Re, and Roberto Montanari. 2011. Driver workload and eye blink duration. *Transportation Research Part F: Traffic Psychology and Behaviour* 14, 4 (2011), 199–208. <https://doi.org/10.1016/j.trf.2010.12.001>
- [11] Luzheng Bi, Xin-an Fan, Ke Jie, Teng Teng, Hongsheng Ding, and Yili Liu. 2014. Using a Head-up Display-Based Steady-State Visually Evoked Potential Brain-Computer Interface to Control a Simulated Vehicle. *IEEE Transactions on Intelligent Transportation Systems* 15, 3 (June 2014), 959–966. <https://doi.org/10.1109/TITS.2013.2291402>
- [12] Luzheng Bi, Xin-An Fan, Nini Luo, Ke Jie, Yun Li, and Yili Liu. 2013. A Head-Up Display-Based P300 Brain-Computer Interface for Destination Selection. *IEEE Transactions on Intelligent Transportation Systems* 14, 4 (Dec. 2013), 1996–2001. <https://doi.org/10.1109/TITS.2013.2266135>
- [13] Simone Bianco and Paolo Napolitano. 2019. Biometric Recognition Using Multimodal Physiological Signals. *IEEE Access* 7 (2019), 83581–83588. <https://doi.org/10.1109/ACCESS.2019.2923856>

- [14] Pradipta Biswas and Gowdham Prabhakar. 2018. Detecting drivers' cognitive load from saccadic intrusion. *Transportation Research Part F: Traffic Psychology and Behaviour* 54 (2018), 63–78. <https://doi.org/10.1016/j.trf.2018.01.017>
- [15] Michael Braun and Florian Alt. 2019. Affective Assistants: A Matter of States and Traits. In *Extended Abstracts of the 2019 CHI Conference on Human Factors in Computing Systems (CHI EA '19)*. Association for Computing Machinery, New York, NY, USA, 1–6. <https://doi.org/10.1145/3290607.3313051> event-place: Glasgow, Scotland Uk.
- [16] Michael Braun, Jingyi Li, Florian Weber, Bastian Pfleging, Andreas Butz, and Florian Alt. 2020. What If Your Car Would Care? Exploring Use Cases For Affective Automotive User Interfaces. In *22nd International Conference on Human-Computer Interaction with Mobile Devices and Services*. Association for Computing Machinery, New York, NY, USA, Article 37, 12 pages. <https://doi.org/10.1145/3379503.3403530>
- [17] Michael Braun, Florian Weber, and Florian Alt. 2021. Affective Automotive User Interfaces—Reviewing the State of Driver Affect Research and Emotion Regulation in the Car. *ACM Comput. Surv.* 54, 7, Article 137 (sep 2021), 26 pages. <https://doi.org/10.1145/3460938>
- [18] Mattia Bruschetta, Carlo Cenedese, Alessandro Beghi, and Fabio Maran. 2018. A Motion Cueing Algorithm With Look-Ahead and Driver Characterization: Application to Vertical Car Dynamics. *IEEE Transactions on Human-Machine Systems* 48, 1 (Feb. 2018), 6–16. <https://doi.org/10.1109/THMS.2017.2776207>
- [19] Jonas Bårgman, Vera Lisovskaja, Trent Victor, Carol Flanagan, and Marco Dozza. 2015. How does glance behavior influence crash and injury risk? A 'what-if' counterfactual simulation using crashes and near-crashes from SHRP2. *Transportation Research Part F: Traffic Psychology and Behaviour* 35 (2015), 152–169. <https://doi.org/10.1016/j.trf.2015.10.011>
- [20] Pınar Bıçaksız, Mehmet Harma, Burak Doğruyol, Timo Lajunen, and Türker Özkan. 2018. Implicit evaluations about driving skills predicting driving performance. *Transportation Research Part F: Traffic Psychology and Behaviour* 54 (2018), 357–366. <https://doi.org/10.1016/j.trf.2018.02.022>
- [21] Arijit Chowdhury, Tanushree Banerjee, Tapas Chakravarty, and P. Balamuralidhar. 2015. Smartphone Based Estimation of Relative Risk Propensity for Inducing Good Driving Behavior. In *Adjunct Proceedings of the 2015 ACM International Joint Conference on Pervasive and Ubiquitous Computing and Proceedings of the 2015 ACM International Symposium on Wearable Computers (UbiComp/ISWC'15 Adjunct)*. Association for Computing Machinery, New York, NY, USA, 743–751. <https://doi.org/10.1145/2800835.2804392> event-place: Osaka, Japan.
- [22] Qi Deng, Jiao Wang, Kevin Hillebrand, Christopher Ragenold Benjamin, and Dirk Söffker. 2020. Prediction Performance of Lane Changing Behaviors: A Study of Combining Environmental and Eye-Tracking Data in a Driving Simulator. *IEEE Transactions on Intelligent Transportation Systems* 21, 8 (Aug. 2020), 3561–3570. <https://doi.org/10.1109/TITS.2019.2937287>
- [23] Henrik Detjen, Sarah Faltaous, Bastian Pfleging, Stefan Geisler, and Stefan Schneegeß. 2021. How to Increase Automated Vehicles' Acceptance through In-Vehicle Interaction Design: A Review. *International Journal of Human-Computer Interaction* 37 (01 2021), 1–23. <https://doi.org/10.1080/10447318.2020.1860517>
- [24] Abhinav Dhall, Garima Sharma, Roland Goecke, and Tom Gedeon. 2020. EmotiW 2020: Driver Gaze, Group Emotion, Student Engagement and Physiological Signal Based Challenges. In *Proceedings of the 2020 International Conference on Multimodal Interaction (ICMI '20)*. Association for Computing Machinery, New York, NY, USA, 784–789. <https://doi.org/10.1145/3382507.3417973> event-place: Virtual Event, Netherlands.
- [25] Pietro Di Lena, Silvia Mirri, Catia Prandi, Paola Salomoni, and Giovanni Delnevo. 2017. In-Vehicle Human Machine Interface: An Approach to Enhance Eco-Driving Behaviors. In *Proceedings of the 2017 ACM Workshop on Interacting with Smart Objects (SmartObject '17)*. Association for Computing Machinery, New York, NY, USA, 7–12. <https://doi.org/10.1145/3038450.3038455> event-place: Limassol, Cyprus.
- [26] Nicole Dillen, Marko Ilievski, Edith Law, Lennart E. Nacke, Krzysztof Czarnecki, and Oliver Schneider. 2020. *Keep Calm and Ride Along: Passenger Comfort and Anxiety as Physiological Responses to Autonomous Driving Styles*. Association for Computing Machinery, New York, NY, USA, 1–13. <https://doi.org/10.1145/3313831.3376247>
- [27] Guanglong Du, Tao Li, Chunquan Li, Peter X. Liu, and Di Li. 2021. Vision-Based Fatigue Driving Recognition Method Integrating Heart Rate and Facial Features. *IEEE Transactions on Intelligent Transportation Systems* 22, 5 (May 2021), 3089–3100. <https://doi.org/10.1109/TITS.2020.2979527>
- [28] Hesham M. Eraqi, Yehya Abouelnaga, Mohamed H. Saad, and Mohamed N. Moustafa. 2019. Driver Distraction Identification with an Ensemble of Convolutional Neural Networks. *CoRR* abs/1901.09097 (2019), 13 pages. [arXiv:1901.09097](http://arxiv.org/abs/1901.09097) <http://arxiv.org/abs/1901.09097>
- [29] Ziya Ercan, Ashwin Carvalho, Metin Gokasan, and Francesco Borrelli. 2017. Modeling, Identification, and Predictive Control of a Driver Steering Assistance System. *IEEE Transactions on Human-Machine Systems* 47, 5 (Oct. 2017), 700–710. <https://doi.org/10.1109/THMS.2017.2717881>
- [30] Florian Eyben, Martin Wöllmer, Tony Poitschke, Björn Schuller, Christoph Blaschke, Berthold Färber, and Nhu Nguyen-Thien. 2010. Emotion on the Road: Necessity, Acceptance, and Feasibility of Affective Computing in the Car. *Adv. in Hum.-Comp. Int.* 2010, Article 5 (jan 2010), 17 pages. <https://doi.org/10.1155/2010/263593>

- [31] Xin-an Fan, Luzheng Bi, Teng Teng, Hongsheng Ding, and Yili Liu. 2015. A Brain–Computer Interface–Based Vehicle Destination Selection System Using P300 and SSVEP Signals. *IEEE Transactions on Intelligent Transportation Systems* 16, 1 (Feb. 2015), 274–283. <https://doi.org/10.1109/TITS.2014.2330000>
- [32] Umer Farooq and Jonathan Grudin. 2016. Human-Computer Integration. *Interactions* 23, 6 (oct 2016), 26–32. <https://doi.org/10.1145/3001896>
- [33] Raul Fernandez-Rojas, Anthony Perry, Hemant Singh, Benjamin Campbell, Saber Elsayed, Robert Hunjet, and Hussein A. Abbass. 2019. Contextual Awareness in Human-Advanced-Vehicle Systems: A Survey. *IEEE Access* 7 (2019), 33304–33328. <https://doi.org/10.1109/ACCESS.2019.2902812>
- [34] W.J. Fleming. 2001. Overview of automotive sensors. *IEEE Sensors Journal* 1, 4 (Dec. 2001), 296–308. <https://doi.org/10.1109/7361.983469> Conference Name: IEEE Sensors Journal.
- [35] Anna-Katharina Frison, Philipp Wintersberger, Andreas Riener, Clemens Schartmüller, Linda Ng Boyle, Erika Miller, and Klemens Weigl. 2019. *In UX We Trust: Investigation of Aesthetics and Usability of Driver-Vehicle Interfaces and Their Impact on the Perception of Automated Driving*. Association for Computing Machinery, New York, NY, USA, 1–13. <https://doi.org/10.1145/3290605.3300374>
- [36] Martin Gjoreski, Matjaž Gams, Mitja Luštrek, Pelin Genc, Jens-U. Garbas, and Teena Hassan. 2020. Machine Learning and End-to-End Deep Learning for Monitoring Driver Distractions From Physiological and Visual Signals. *IEEE Access* 8 (2020), 70590–70603. <https://doi.org/10.1109/ACCESS.2020.2986810>
- [37] David Sierra González, Jilles Steeve Dibangoye, and Christian Laugier. 2016. High-speed highway scene prediction based on driver models learned from demonstrations. In *2016 IEEE 19th International Conference on Intelligent Transportation Systems (ITSC)*. IEEE, New York, NY, USA, 149–155. <https://doi.org/10.1109/ITSC.2016.7795546> ISSN: 2153-0017.
- [38] David Sierra González, Víctor Romero-Cano, Jilles Steeve Dibangoye, and Christian Laugier. 2017. Interaction-aware driver maneuver inference in highways using realistic driver models. In *2017 IEEE 20th International Conference on Intelligent Transportation Systems (ITSC)*. IEEE, New York, NY, USA, 1–8. <https://doi.org/10.1109/ITSC.2017.8317709> ISSN: 2153-0017.
- [39] GoogleScholar. 2021. Top Publications Human Computer Interaction. https://scholar.google.es/citations?view_op=top_venues&hl=en&vq=eng_humancomputerinteraction. Online; accessed 09. September 2021.
- [40] Mariel Grassmann, Elke Vlemincx, Andreas von Leupoldt, Justin M. Mittelstädt, and Omer Van den Bergh. 2016. Respiratory Changes in Response to Cognitive Load: A Systematic Review. *Neural Plasticity* 2016 (14 Jun 2016), 8146809. <https://doi.org/10.1155/2016/8146809>
- [41] Zizheng Guo, Yufan Pan, Guozhen Zhao, Jun Zhang, and Ni Dong. 2020. Recognizing Hazard Perception in a Visual Blind Area Based on EEG Features. *IEEE Access* 8 (2020), 48917–48928. <https://doi.org/10.1109/ACCESS.2020.2978436>
- [42] W. Hajek, I. Gaponova, K. H. Fleischer, and J. Krems. 2013. Workload-adaptive cruise control – A new generation of advanced driver assistance systems. *Transportation Research Part F: Traffic Psychology and Behaviour* 20 (2013), 108–120. <https://doi.org/10.1016/j.trf.2013.06.001>
- [43] Peter A. Heeman, Tomer Meshorer, Andrew L. Kun, Oskar Palinko, and Zeljko Medenica. 2013. Estimating Cognitive Load Using Pupil Diameter during a Spoken Dialogue Task. In *Proceedings of the 5th International Conference on Automotive User Interfaces and Interactive Vehicular Applications (AutomotiveUI '13)*. Association for Computing Machinery, New York, NY, USA, 242–245. <https://doi.org/10.1145/2516540.2516570> event-place: Eindhoven, Netherlands.
- [44] Andreas Heigemeyr and Andreas Harrer. 2013. An integrated method for Adaptive automotive Human Machine Interfaces. In *16th International IEEE Conference on Intelligent Transportation Systems (ITSC 2013)*. IEEE, New York, NY, USA, 558–564. <https://doi.org/10.1109/ITSC.2013.6728290> ISSN: 2153-0017.
- [45] Deanna Hood, Damian Joseph, Andry Rakotonirainy, Sridha Sridharan, and Clinton Fookes. 2012. Use of Brain Computer Interface to Drive: Preliminary Results. In *Proceedings of the 4th International Conference on Automotive User Interfaces and Interactive Vehicular Applications (AutomotiveUI '12)*. Association for Computing Machinery, New York, NY, USA, 103–106. <https://doi.org/10.1145/2390256.2390272> event-place: Portsmouth, New Hampshire.
- [46] Zhentao Huang, Rongze Li, Wangkai Jin, Zilin Song, Yu Zhang, Xiangjun Peng, and Xu Sun. 2020. Face2Multi-Modal: In-Vehicle Multi-Modal Predictors via Facial Expressions. In *12th International Conference on Automotive User Interfaces and Interactive Vehicular Applications (AutomotiveUI '20)*. Association for Computing Machinery, New York, NY, USA, 30–33. <https://doi.org/10.1145/3409251.3411716> event-place: Virtual Event, DC, USA.
- [47] Ryo Imai, Kosuke Watanabe, Kota Tsubouchi, and Masamichi Shimosaka. 2019. Proactive Car Navigation: How Can Destination Prediction Give Us New Navigation Experience?. In *Adjunct Proceedings of the 2019 ACM International Joint Conference on Pervasive and Ubiquitous Computing and Proceedings of the 2019 ACM International Symposium on Wearable Computers (UbiComp/ISWC '19 Adjunct)*. Association for Computing Machinery, New York, NY, USA, 292–295. <https://doi.org/10.1145/3341162.3343757> event-place: London, United Kingdom.
- [48] Chongchong Jin, Zhongjie Zhu, Yongqiang Bai, Gangyi Jiang, and Anqing He. 2020. A Deep-Learning-Based Scheme for Detecting Driver Cell-Phone Use. *IEEE Access* 8 (2020), 18580–18589. <https://doi.org/10.1109/ACCESS.2020.2968464>

- [49] Christian Jones and Ing-Marie Jonsson. 2008. Using Paralinguistic Cues in Speech to Recognise Emotions in Older Car Drivers. , 229-240 pages. https://doi.org/10.1007/978-3-540-85099-1_20
- [50] Christian Martyn Jones and Ing-Marie Jonsson. 2005. Automatic Recognition of Affective Cues in the Speech of Car Drivers to Allow Appropriate Responses. In *Proceedings of the 17th Australia Conference on Computer-Human Interaction: Citizens Online: Considerations for Today and the Future (OZCHI '05)*. Computer-Human Interaction Special Interest Group (CHISIG) of Australia, Narrabundah, AUS, 1–10.
- [51] Sajid Ali Khan, Shariq Hussain, Sun Xiaoming, and Shunkun Yang. 2018. An Effective Framework for Driver Fatigue Recognition Based on Intelligent Facial Expressions Analysis. *IEEE Access* 6 (2018), 67459–67468. <https://doi.org/10.1109/ACCESS.2018.2878601>
- [52] Sander Koelstra, Christian Muhl, Mohammad Soleymani, Jong-Seok Lee, Ashkan Yazdani, Touradj Ebrahimi, Thierry Pun, Anton Nijholt, and Ioannis Patras. 2012. DEAP: A Database for Emotion Analysis ;Using Physiological Signals. *IEEE Transactions on Affective Computing* 3, 1 (2012), 18–31. <https://doi.org/10.1109/T-AFFC.2011.15>
- [53] J. Richard Landis and Gary G. Koch. 1977. The Measurement of Observer Agreement for Categorical Data. *Biometrics* 33, 1 (1977), 159–174. <http://www.jstor.org/stable/2529310>
- [54] Yassine Lassoued, Julien Monteil, Yingqi Gu, Giovanni Russo, Robert Shorten, and Martin Mevissen. 2017. A hidden Markov model for route and destination prediction. In *2017 IEEE 20th International Conference on Intelligent Transportation Systems (ITSC)*. IEEE, New York, NY, USA, 1–6. <https://doi.org/10.1109/ITSC.2017.8317888> ISSN: 2153-0017.
- [55] Larry Leifer. 2008. The Design of Implicit Interactions: Making Interactive Systems Less Obnoxious. *Design Issues* 24 (07 2008), 72–84. <https://doi.org/10.1162/desi.2008.24.3.72>
- [56] Gang Li and Wan-Young Chung. 2018. Combined EEG-Gyroscope-tDCS Brain Machine Interface System for Early Management of Driver Drowsiness. *IEEE Transactions on Human-Machine Systems* 48, 1 (Feb. 2018), 50–62. <https://doi.org/10.1109/THMS.2017.2759808>
- [57] Yutong Li, Chen Lv, and Junliang Xue. 2019. A Novel Predictive Haptic Control Interface for Automation-to-Human Takeover of Automated Vehicles. In *2019 IEEE Intelligent Vehicles Symposium (IV)*. IEEE, New York, NY, USA, 994–999. <https://doi.org/10.1109/IVS.2019.8814252> ISSN: 2642-7214.
- [58] Jinling Lian, Luzheng Bi, and Weijie Fei. 2019. A Novel Event-Related Potential-Based Brain–Computer Interface for Continuously Controlling Dynamic Systems. *IEEE Access* 7 (2019), 38721–38729. <https://doi.org/10.1109/ACCESS.2019.2905669>
- [59] Hannah Limerick, James W. Moore, and David Coyle. 2015. Symbiotic Interaction and the Experience of Agency. In *Symbiotic Interaction - 4th International Workshop, Symbiotic 2015, Berlin, Germany, October 7-8, 2015, Proceedings (Lecture Notes in Computer Science, Vol. 9359)*, Benjamin Blankertz, Giulio Jacucci, Luciano Gamberini, Anna Spagnolli, and Jonathan Freeman (Eds.). Springer, Cham, 99–104. https://doi.org/10.1007/978-3-319-24917-9_10
- [60] Qingxiao Liu, Shaohang Xu, Chao Lu, Hui Yao, and Huiyan Chen. 2020. Early Recognition of Driving Intention for Lane Change Based on Recurrent Hidden Semi-Markov Model. *IEEE Transactions on Vehicular Technology* 69, 10 (Oct. 2020), 10545–10557. <https://doi.org/10.1109/TVT.2020.3011672>
- [61] Yun Lu and Luzheng Bi. 2021. Human Behavior Model-Based Predictive Control of Longitudinal Brain-Controlled Driving. *IEEE Transactions on Intelligent Transportation Systems* 22, 3 (March 2021), 1361–1374. <https://doi.org/10.1109/TITS.2020.2969444>
- [62] Andreas Löcken, Klas Ihme, and Anirudh Unni. 2017. Towards Designing Affect-Aware Systems for Mitigating the Effects of In-Vehicle Frustration. In *Proceedings of the 9th International Conference on Automotive User Interfaces and Interactive Vehicular Applications Adjunct (AutomotiveUI '17)*. Association for Computing Machinery, New York, NY, USA, 88–93. <https://doi.org/10.1145/3131726.3131744> event-place: Oldenburg, Germany.
- [63] Juan Manuel Madrid, Carlos A. Arce-Lopera, and Fabian Lasso. 2018. Biometric Interface for Driver’s Stress Detection and Awareness. In *Adjunct Proceedings of the 10th International Conference on Automotive User Interfaces and Interactive Vehicular Applications (AutomotiveUI '18)*. Association for Computing Machinery, New York, NY, USA, 132–136. <https://doi.org/10.1145/3239092.3265970> event-place: Toronto, ON, Canada.
- [64] Manuel Martin, Alina Roitberg, Monica Haurilet, Matthias Horne, Simon Reiß, Michael Voit, and Rainer Stiefelhagen. 2019. Drive&Act: A Multi-modal Dataset for Fine-grained Driver Behavior Recognition in Autonomous Vehicles. In *The IEEE International Conference on Computer Vision (ICCV)*. IEEE, New York, NY, USA, 2801–2810.
- [65] Sujitha Martin, Eshed Ohn-Bar, Ashish Tawari, and Mohan M. Trivedi. 2014. Understanding head and hand activities and coordination in naturalistic driving videos. In *2014 IEEE Intelligent Vehicles Symposium Proceedings*. IEEE, New York, NY, USA, 884–889. <https://doi.org/10.1109/IVS.2014.6856610> ISSN: 1931-0587.
- [66] Sujitha Martin, Ashish Tawari, Erik Murphy-Chutorian, Shinko Y. Cheng, and Mohan Trivedi. 2012. On the Design and Evaluation of Robust Head Pose for Visual User Interfaces: Algorithms, Databases, and Comparisons. In *Proceedings of the 4th International Conference on Automotive User Interfaces and Interactive Vehicular Applications (AutomotiveUI '12)*. Association for Computing Machinery, New York, NY, USA, 149–154. <https://doi.org/10.1145/2390256.2390281>

event-place: Portsmouth, New Hampshire.

- [67] Mary McHugh. 2012. Interrater reliability: The kappa statistic. *Biochemia medica : časopis Hrvatskoga društva medicinskih biokemičara / HDMB* 22 (10 2012), 276–82. <https://doi.org/10.11613/BM.2012.031>
- [68] Hideaki Misawa, Kazuhito Takenaka, Tomoya Sugihara, Hailong Liu, Tadahiro Taniguchi, and Takashi Bando. 2017. Prediction of driving behavior based on sequence to sequence model with parametric bias. In *2017 IEEE 20th International Conference on Intelligent Transportation Systems (ITSC)*. IEEE, New York, NY, USA, 1–6. <https://doi.org/10.1109/ITSC.2017.8317789> ISSN: 2153-0017.
- [69] David Moher, Alessandro Liberati, Jennifer Tetzlaff, and Douglas G Altman. 2009. Preferred reporting items for systematic reviews and meta-analyses: the PRISMA statement. *Annals of internal medicine* 151, 4 (2009), 264–269.
- [70] Mohammad Mehdi Moniri and Christian Müller. 2014. EyeVIUS: Intelligent Vehicles in Intelligent Urban Spaces. In *Adjunct Proceedings of the 6th International Conference on Automotive User Interfaces and Interactive Vehicular Applications (AutomotiveUI '14)*. Association for Computing Machinery, New York, NY, USA, 1–6. <https://doi.org/10.1145/2667239.2667265> event-place: Seattle, WA, USA.
- [71] Brendan Morris, Anup Doshi, and Mohan Trivedi. 2011. Lane change intent prediction for driver assistance: On-road design and evaluation. In *2011 IEEE Intelligent Vehicles Symposium (IV)*. IEEE, New York, NY, USA, 895–901. <https://doi.org/10.1109/IVS.2011.5940538> ISSN: 1931-0587.
- [72] Florian Floyd Mueller, Pedro Lopes, Paul Strohmeier, Wendy Ju, Caitlyn Seim, Martin Weigel, Suranga Nanayakkara, Marianna Obrist, Zhuying Li, Joseph Delfa, Jun Nishida, Elizabeth M. Gerber, Dag Svanaes, Jonathan Grudin, Stefan Greuter, Kai Kunze, Thomas Erickson, Steven Greenspan, Masahiko Inami, Joe Marshall, Harald Reiterer, Katrin Wolf, Jochen Meyer, Thecla Schiphorst, Dakuo Wang, and Pattie Maes. 2020. Next Steps for Human-Computer Integration. In *Proceedings of the 2020 CHI Conference on Human Factors in Computing Systems (Honolulu, HI, USA) (CHI '20)*. Association for Computing Machinery, New York, NY, USA, 1–15. <https://doi.org/10.1145/3313831.3376242>
- [73] Prajval Murali, Mohsen Kaboli, Ravinder Dahiya, Kumar Prajval, and Ravinder Dahiya. 2021. Intelligent In-Vehicle Interaction Technologies.
- [74] Michal Niezgoda, Adam Tarnowski, Mikołaj Kruszewski, and Tomasz Kamiński. 2015. Towards testing auditory–vocal interfaces and detecting distraction while driving: A comparison of eye-movement measures in the assessment of cognitive workload. *Transportation Research Part F: Traffic Psychology and Behaviour* 32 (2015), 23–34. <https://doi.org/10.1016/j.trf.2015.04.012>
- [75] Richard Nisbett and Timothy Wilson. 1977. The Halo Effect: Evidence for Unconscious Alteration of Judgments. *Journal of Personality and Social Psychology* 35 (04 1977), 250–256. <https://doi.org/10.1037/0022-3514.35.4.250>
- [76] Michael Oehl, Klas Ihme, Esther Bosch, Anna-Antonia Pape, Mathias Vukelić, and Michael Braun. 2019. Emotions in the Age of Automated Driving - Developing Use Cases for Empathic Cars. In *Mensch und Computer 2019 - Workshopband*. Gesellschaft für Informatik e.V., Bonn, 2 pages. <https://doi.org/10.18420/muc2019-ws-267>
- [77] Michael Oehl, Klas Ihme, Anna-Antonia Pape, Mathias Vukelić, and Michael Braun. 2020. Affective Use Cases for Empathic Vehicles in Highly Automated Driving: Results of an Expert Workshop. In *HCI in Mobility, Transport, and Automotive Systems. Automated Driving and In-Vehicle Experience Design*, Heidi Krömker (Ed.). Springer International Publishing, Cham, 89–100.
- [78] Catherine Oh Kruzic, David Kruzic, Fernanda Herrera, and Jeremy Bailenson. 2020. Facial expressions contribute more than body movements to conversational outcomes in avatar-mediated virtual environments. *Scientific Reports* 10, 1 (26 Nov 2020), 20626. <https://doi.org/10.1038/s41598-020-76672-4>
- [79] Eshed Ohn-Bar and Mohan Manubhai Trivedi. 2016. Looking at Humans in the Age of Self-Driving and Highly Automated Vehicles. *IEEE Transactions on Intelligent Vehicles* 1, 1 (March 2016), 90–104. <https://doi.org/10.1109/TIV.2016.2571067> Conference Name: IEEE Transactions on Intelligent Vehicles.
- [80] Yang-Kun Ou, Yung-Ching Liu, and Feng-Yuan Shih. 2013. Risk prediction model for drivers' in-vehicle activities – Application of task analysis and back-propagation neural network. *Transportation Research Part F: Traffic Psychology and Behaviour* 18 (2013), 83–93. <https://doi.org/10.1016/j.trf.2012.12.013>
- [81] Erfan Pakdamanian, Shili Sheng, Sonia Bae, Seongkook Heo, Sarit Kraus, and Lu Feng. 2021. DeepTake: Prediction of Driver Takeover Behavior Using Multimodal Data. In *Proceedings of the 2021 CHI Conference on Human Factors in Computing Systems (Yokohama, Japan) (CHI '21)*. Association for Computing Machinery, New York, NY, USA, Article 103, 14 pages. <https://doi.org/10.1145/3411764.3445563>
- [82] George Panagopoulos and Ioannis Pavlidis. 2020. Forecasting Markers of Habitual Driving Behaviors Associated With Crash Risk. *IEEE Transactions on Intelligent Transportation Systems* 21, 2 (Feb. 2020), 841–851. <https://doi.org/10.1109/TITS.2019.2910157>
- [83] Anna Persson, Hanna Jonasson, Ingemar Fredriksson, Urban Wiklund, and Christer Ahlström. 2021. Heart Rate Variability for Classification of Alert Versus Sleep Deprived Drivers in Real Road Driving Conditions. *IEEE Transactions on Intelligent Transportation Systems* 22, 6 (June 2021), 3316–3325. <https://doi.org/10.1109/TITS.2020.2981941>

- [84] Bastian Pfleging, Shadan Sadeghian, and Debargha Dey. 2021. User interfaces for automated vehicles. *it - Information Technology* 63, 2 (2021), 73–75. <https://doi.org/10.1515/itit-2021-0020>
- [85] Christian Purucker, Frauke Berghöfer, Frederik Naujoks, Katharina Wiedemann, and Claus Marberger. 2018. Prediction of Take-Over Time Demand in Highly Automated Driving. Results of a Naturalistic Driving Study.
- [86] Rajeev Ranjan, Vishal M. Patel, and Rama Chellappa. 2017. HyperFace: A Deep Multi-task Learning Framework for Face Detection, Landmark Localization, Pose Estimation, and Gender Recognition. arXiv:1603.01249 [cs.CV]
- [87] Rajeev Ranjan, Swami Sankar, Carlos Castillo, and Rama Chellappa. 2016. An All-In-One Convolutional Neural Network for Face Analysis.
- [88] Andreas Riemer. 2012. Driver-Vehicle Confluence or How to Control Your Car in Future?. In *Proceedings of the 4th International Conference on Automotive User Interfaces and Interactive Vehicular Applications* (Portsmouth, New Hampshire) (*AutomotiveUI '12*). Association for Computing Machinery, New York, NY, USA, 217–224. <https://doi.org/10.1145/2390256.2390293>
- [89] Victor Palacios Rivera, Laura Rumbel, and Ignacio Alvarez. 2016. Autonomous HMI Made Easy: Prototyping Reactive In-Cabin Aware HMIs. In *Adjunct Proceedings of the 8th International Conference on Automotive User Interfaces and Interactive Vehicular Applications (AutomotiveUI '16 Adjunct)*. Association for Computing Machinery, New York, NY, USA, 1–7. <https://doi.org/10.1145/3004323.3004353> event-place: Ann Arbor, MI, USA.
- [90] Munehiko Sato, Rohan S. Puri, Alex Olwal, Yosuke Ushigome, Lukas Franciszkiwicz, Deepak Chandra, Ivan Poupyrev, and Ramesh Raskar. 2017. Zensei: Embedded, Multi-Electrode Bioimpedance Sensing for Implicit, Ubiquitous User Recognition. In *Proceedings of the 2017 CHI Conference on Human Factors in Computing Systems*. Association for Computing Machinery, New York, NY, USA, 3972–3985. <https://doi.org/10.1145/3025453.3025536>
- [91] Albrecht Schmidt. 1999. Implicit Human Computer Interaction Through Context. *Personal Technologies* 4 (07 1999). <https://doi.org/10.1007/BF01324126>
- [92] Barış Serim and Giulio Jacucci. 2019. *Explicating "Implicit Interaction": An Examination of the Concept and Challenges for Research*. Association for Computing Machinery, New York, NY, USA, 1–16. <https://doi.org/10.1145/3290605.3300647>
- [93] Rajeev Sharma and Vladimir Pavlovic. 1998. Toward Multimodal Human-Computer Interface. *Proc. IEEE* 86 (06 1998), 853 – 869. <https://doi.org/10.1109/5.664275>
- [94] Victor A. Shia, Yiqi Gao, Ramanarayan Vasudevan, Katherine Driggs Campbell, Theresa Lin, Francesco Borrelli, and Ruzena Bajcsy. 2014. Semiautonomous Vehicular Control Using Driver Modeling. *IEEE Transactions on Intelligent Transportation Systems* 15, 6 (Dec. 2014), 2696–2709. <https://doi.org/10.1109/TITS.2014.2325776>
- [95] Erin T. Solovey, Marin Zec, Enrique Abdon Garcia Perez, Bryan Reimer, and Bruce Mehler. 2014. Classifying Driver Workload Using Physiological and Driving Performance Data: Two Field Studies. In *Proceedings of the SIGCHI Conference on Human Factors in Computing Systems (CHI '14)*. Association for Computing Machinery, New York, NY, USA, 4057–4066. <https://doi.org/10.1145/2556288.2557068> event-place: Toronto, Ontario, Canada.
- [96] Standard J3016_202104 2021. *Taxonomy and Definitions for Terms Related to Driving Automation Systems for On-Road Motor Vehicles*. Standard. SAE International.
- [97] Gunnar Stevens, Paul Bossauer, Stephanie Vonholdt, and Christina Pakusch. 2019. Using Time and Space Efficiently in Driverless Cars: Findings of a Co-Design Study. In *Proceedings of the 2019 CHI Conference on Human Factors in Computing Systems (CHI '19)*. Association for Computing Machinery, New York, NY, USA, 1–14. <https://doi.org/10.1145/3290605.3300635>
- [98] Fabio Tango and Marco Botta. 2013. Real-Time Detection System of Driver Distraction Using Machine Learning. *IEEE Transactions on Intelligent Transportation Systems* 14, 2 (June 2013), 894–905. <https://doi.org/10.1109/TITS.2013.2247760>
- [99] Tadahiro Taniguchi, Kai Furusawa, Hailong Liu, Yusuke Tanaka, Kazuhito Takenaka, and Takashi Bando. 2016. Determining Utterance Timing of a Driving Agent With Double Articulation Analyzer. *IEEE Transactions on Intelligent Transportation Systems* 17, 3 (March 2016), 810–821. <https://doi.org/10.1109/TITS.2015.2484421>
- [100] M. Asjid Tanveer, M. Jawad Khan, M. Jahangir Qureshi, Noman Naseer, and Keum-Shik Hong. 2019. Enhanced Drowsiness Detection Using Deep Learning: An fNIRS Study. *IEEE Access* 7 (2019), 137920–137929. <https://doi.org/10.1109/ACCESS.2019.2942838>
- [101] Cuong Tran, Anup Doshi, and Mohan M. Trivedi. 2011. Pedal error prediction by driver foot gesture analysis: A vision-based inquiry. In *2011 IEEE Intelligent Vehicles Symposium (IV)*. IEEE, New York, NY, USA, 577–582. <https://doi.org/10.1109/IVS.2011.5940548> ISSN: 1931-0587.
- [102] Duy Tran, Jianhao Du, Weihua Sheng, Denis Osipychev, Yuge Sun, and He Bai. 2019. A Human-Vehicle Collaborative Driving Framework for Driver Assistance. *IEEE Transactions on Intelligent Transportation Systems* 20, 9 (Sept. 2019), 3470–3485. <https://doi.org/10.1109/TITS.2018.2878027>
- [103] Udo Trutschel, Christian Heinze, Bill Sirois, Martin Golz, David Sommer, and David Edwards. 2012. Heart Rate Measures Reflect the Interaction of Low Mental Workload and Fatigue during Driving Simulation. In *Proceedings of the 4th International Conference on Automotive User Interfaces and Interactive Vehicular Applications* (Portsmouth,

- New Hampshire (*AutomotiveUI '12*). Association for Computing Machinery, New York, NY, USA, 261–264. <https://doi.org/10.1145/2390256.2390299>
- [104] José Vicente, Pablo Laguna, Ariadna Bartra, and Raquel Bailón. 2011. Detection of driver's drowsiness by means of HRV analysis. , 89–92 pages.
- [105] Sourabh Vora, Akshay Rangesh, and Mohan Manubhai Trivedi. 2018. Driver Gaze Zone Estimation Using Convolutional Neural Networks: A General Framework and Ablative Analysis. *IEEE Transactions on Intelligent Vehicles* 3, 3 (Sept. 2018), 254–265. <https://doi.org/10.1109/TIV.2018.2843120>
- [106] Ke Wang and Ping Guo. 2021. An Ensemble Classification Model With Unsupervised Representation Learning for Driving Stress Recognition Using Physiological Signals. *IEEE Transactions on Intelligent Transportation Systems* 22, 6 (June 2021), 3303–3315. <https://doi.org/10.1109/TITS.2020.2980555>
- [107] Tao Wang, Yuzhi Chen, Xingchen Yan, Wenyong Li, and Dong Shi. 2020. Assessment of Drivers' Comprehensive Driving Capability Under Man-Computer Cooperative Driving Conditions. *IEEE Access* 8 (2020), 152909–152923. <https://doi.org/10.1109/ACCESS.2020.3016834>
- [108] Xiaoyuan Wang, Yongqing Guo, Chenglin Bai, Quan Yuan, Shanliang Liu, and Junyan Han. 2020. Driver's Intention Identification With the Involvement of Emotional Factors in Two-Lane Roads. *IEEE Transactions on Intelligent Transportation Systems* 22, 11 (2020), 1–9. <https://doi.org/10.1109/TITS.2020.2995837>
- [109] Dilranjan S. Wickramasuriya and Rose T. Faghieh. 2020. A Marked Point Process Filtering Approach for Tracking Sympathetic Arousal From Skin Conductance. *IEEE Access* 8 (2020), 68499–68513. <https://doi.org/10.1109/ACCESS.2020.2984508>
- [110] Christopher Wilson, Diane Gyi, Andrew Morris, Robert Bateman, and Hiroyuki Tanaka. 2022. Non-Driving Related tasks and journey types for future autonomous vehicle owners. *Transportation Research Part F: Traffic Psychology and Behaviour* 85 (2022), 150–160. <https://doi.org/10.1016/j.trf.2022.01.004>
- [111] David Windridge, Affan Shaukat, and Erik Hollnagel. 2013. Characterizing Driver Intention via Hierarchical Perception–Action Modeling. *IEEE Transactions on Human-Machine Systems* 43, 1 (Jan. 2013), 17–31. <https://doi.org/10.1109/TSMCA.2012.2216868>
- [112] Yanbin Wu, Ken Kihara, Yuji Takeda, Toshihisa Sato, Motoyuki Akamatsu, and Satoshi Kitazaki. 2019. Assessing the Mental States of Fallback-Ready Drivers in Automated Driving by Electrooculography. In *2019 IEEE Intelligent Transportation Systems Conference (ITSC)*. IEEE, New York, NY, USA, 4018–4023. <https://doi.org/10.1109/ITSC.2019.8917029>
- [113] Yanbin Wu, Ken Kihara, Yuji Takeda, Toshihisa Sato, Motoyuki Akamatsu, Satoshi Kitazaki, Koki Nakagawa, Kenta Yamada, Hiromitsu Oka, and Shougo Kameyama. 2021. Eye movements predict driver reaction time to takeover request in automated driving: A real-vehicle study. *Transportation Research Part F: Traffic Psychology and Behaviour* 81 (2021), 355–363. <https://doi.org/10.1016/j.trf.2021.06.017>
- [114] Guoqing Xu, Li Liu, Yongsheng Ou, and Zhangjun Song. 2012. Dynamic Modeling of Driver Control Strategy of Lane-Change Behavior and Trajectory Planning for Collision Prediction. *IEEE Transactions on Intelligent Transportation Systems* 13, 3 (Sept. 2012), 1138–1155. <https://doi.org/10.1109/TITS.2012.2187447>
- [115] Lijie Xu and Kikuo Fujimura. 2014. Real-Time Driver Activity Recognition with Random Forests. In *Proceedings of the 6th International Conference on Automotive User Interfaces and Interactive Vehicular Applications (AutomotiveUI '14)*. Association for Computing Machinery, New York, NY, USA, 1–8. <https://doi.org/10.1145/2667317.2667333> event-place: Seattle, WA, USA.
- [116] Fei Yan, Mark Eilers, Martin Baumann, and Andreas Luedtke. 2016. Development of a Lane Change Assistance System Adapting to Driver's Uncertainty During Decision-Making. In *Adjunct Proceedings of the 8th International Conference on Automotive User Interfaces and Interactive Vehicular Applications (AutomotiveUI '16 Adjunct)*. Association for Computing Machinery, New York, NY, USA, 93–98. <https://doi.org/10.1145/3004323.3004334> event-place: Ann Arbor, MI, USA.
- [117] Feng You, Xiaolong Li, Yunbo Gong, Hailwei Wang, and Hongyi Li. 2019. A Real-time Driving Drowsiness Detection Algorithm With Individual Differences Consideration. *IEEE Access* 7 (2019), 179396–179408. <https://doi.org/10.1109/ACCESS.2019.2958667>
- [118] Hongbin Yu, Hongtao Lu, Shuihua Wang, Kaijian Xia, Yizhang Jiang, and Pengjiang Qian. 2019. A General Common Spatial Patterns for EEG Analysis With Applications to Vigilance Detection. *IEEE Access* 7 (2019), 111102–111114. <https://doi.org/10.1109/ACCESS.2019.2934519>
- [119] Xiangrui Zeng and Junmin Wang. 2017. A Stochastic Driver Pedal Behavior Model Incorporating Road Information. *IEEE Transactions on Human-Machine Systems* 47, 5 (Oct. 2017), 614–624. <https://doi.org/10.1109/THMS.2017.2674301>
- [120] Sebastian Zepf, Javier Hernandez, Alexander Schmitt, Wolfgang Minker, and Rosalind W. Picard. 2020. Driver Emotion Recognition for Intelligent Vehicles: A Survey. *ACM Comput. Surv.* 53, 3, Article 64 (June 2020), 30 pages. <https://doi.org/10.1145/3388790>

- [121] Chaoyun Zhang, Rui Li, Woojin Kim, Daesub Yoon, and Paul Patras. 2020. Driver Behavior Recognition via Interwoven Deep Convolutional Neural Nets With Multi-Stream Inputs. *IEEE Access* 8 (2020), 191138–191151. <https://doi.org/10.1109/ACCESS.2020.3032344>
- [122] Dong Zhou, Hongyi Liu, Huimin Ma, Xiang Wang, Xiaoqin Zhang, and Yuhan Dong. 2021. Driving Behavior Prediction Considering Cognitive Prior and Driving Context. *IEEE Transactions on Intelligent Transportation Systems* 22, 5 (May 2021), 2669–2678. <https://doi.org/10.1109/TITS.2020.2973751>
- [123] Bing Zhu, Shude Yan, Jian Zhao, and Weiwen Deng. 2018. Personalized Lane-Change Assistance System With Driver Behavior Identification. *IEEE Transactions on Vehicular Technology* 67, 11 (Nov. 2018), 10293–10306. <https://doi.org/10.1109/TVT.2018.2867541>
- [124] Miankuan Zhu, Fujian Liang, Di Yao, Jiangfan Chen, Haobo Li, Lei Han, Yugang Liu, and Zutao Zhang. 2020. Heavy Truck Driver's Drowsiness Detection Method Using Wearable EEG Based on Convolution Neural Network. In *2020 IEEE Intelligent Vehicles Symposium (IV)*. IEEE, New York, NY, USA, 195–201. <https://doi.org/10.1109/IV47402.2020.9304817> ISSN: 2642-7214.

Received February 2022; revised May 2022; accepted June 2022